

The background of the entire page is an underwater photograph of a sunset. The sun is visible as a bright, glowing orb near the top right, with its light rays filtering through the water. The water surface is turbulent, with white foam and bubbles from a splash visible just below the surface. The water transitions from a bright, hazy blue near the surface to a deep, dark blue at the bottom.

zenglow

RED LIGHT THERAPY

**THAILAND'S SMARTEST
WELLNESS UPGRADES**

CATALOGUE

WELLNESS DESIGN SOLUTIONS Page 3

RED LIGHT THERAPY Page 7

Are you also interested in more wellness equipment? Pools? Saunas? Ice Baths?
Ask for our full catalogue

WELLNESS DESIGN SOLUTIONS

Wellness, Every Day — Built for Real Operations

Simple “Life Hacks” That Fit Real Life

Wellness is no longer a destination or a once-a-year reset. It’s become part of everyday living—woven into the hour before work, the 20 minutes after training, or the quiet moment at the end of a long shift. Guests and teams alike are looking for routines that feel good, are easy to repeat, and deliver a clear sense of recovery and balance. Two modalities stand out for their simplicity and evidence base:

- **Red Light Therapy and**
- **Contrast therapy (hot & cold exposure).**

Red Light Therapy (RLT)

Red and near-infrared wavelengths (typically around 630–660 nm and 810–850 nm) are absorbed by cellular structures, particularly the mitochondria. In practical terms, sessions are comfortable, dry, and fast—making them easy to integrate before the gym, after a flight, or between meetings. Operators appreciate the low operating overhead; users appreciate how quickly it slots into a routine.

Contrast Therapy (Hot & Cold Exposure)

Alternating heat and cold is an age-old practice now supported by modern monitoring and safer, purpose-built equipment. Heat brings calm and looseness; cold brings alertness and a “reset” feeling. Together, they create a simple ritual that guests love to talk about—and come back for. With clear guidance and timers, contrast therapy becomes a reliable, staff-friendly experience that photographs well and generates organic word-of-mouth.

Why these two work so well in hospitality and clubs:

- **Short, repeatable formats (15–45 minutes) that fit busy schedules.**
- **Clear guest experience: easy to explain, easy to feel, easy to share.**
- **Operational clarity: preset protocols, simple hygiene routines, and predictable throughput.**
- **Design flexibility: from a single recovery room to a full thermal circuit.**

Our approach keeps things practical. We help you design and operate spaces that are inviting, efficient to maintain, and aligned with general wellness positioning. The result is a daily habit your guests can adopt and your team can run—beautifully, safely, and on time.

ZenGlow Asia — Turnkey Wellness, Delivered Right & On Time

Our vision is straightforward:

offer a professional, end-to-end service—from site survey and design, to import, installation, commissioning, and maintenance—so wellness projects open on time, run smoothly, and delight guests from day one.

What we solve

Too many projects stumble on the same issues: unclear scopes, the wrong equipment, and poor installation causing delays and rework. ZenGlow fixes the root causes with transparent designs, brand-agnostic equipment selection, and an installation-first mindset backed by documented handovers.

How we work (one accountable workflow)

1. **Survey & Consulting:** We map constraints, align with MEP, and size capacity for real-world usage.
2. **Design & Proposal:** Itemized, brand-agnostic BOMs with alternatives, timelines, and responsibilities.
3. **Import & Installation:** Coordinated logistics and professional on-site execution to specification.
4. **Commissioning & Training:** Checklist-based sign-offs, presets saved, and staff trained to operate confidently.
5. **Aftercare & Maintenance:** SLAs, tune-ups, and optional remote support—so the experience remains consistent.

What we deliver

- **Saunas** (infrared & traditional), **red light therapy**, and **cold/contrast plunges and rooms**.
- **Life hack Wellness Equipment**
- Clear drawings and signage; SOPs that staff can actually follow.
- Launch-day assets and advice—from scheduling to simple content templates.

What makes us different

- **Installation-first:** we take responsibility for the handover, not just the brochure.
- **Right offer, right price:** honest scopes with documented inclusions and exclusions.
- **Operator's perspective:** playbooks drawn from running our own wellness studio.

ZenGlow Asia is the single name on the line from the first site photo to the first guest smile—designing with empathy, installing with discipline, and supporting with care.

Our Ecosystem — Pool Control, Life Balance Phuket, and the People Behind ZenGlow

Pool Control (Independent Specialist & Operations Partner)

When projects include cold plunges, pools or hydro features, we introduce **Pool Control**, a Phuket-based specialist led by **Antonin Rouveyrol**. His operations team handles the **fieldwork**—from on-site survey and measurements to installation, testing, and turnkey handover—coordinated to ZenGlow’s standards. Expertise includes pH/ORP monitoring and dosing, filtration and disinfection strategies, and practical plant-room design. Pool Control remains an independent company; the collaboration model is clear and client-friendly: ZenGlow leads the brief and quality, Antonin’s team leads execution on the ground.

Life Balance Phuket (Our Living Showcase)

Located in Chergatlay with lake and temple views near Boat Avenue, **Life Balance Phuket** is our working studio and training ground. It’s where we refine guest-flow, signage, and protocols for **infrared sauna, cold & contrast therapy, red light therapy, and breathwork**—and then translate those learnings into SOPs and playbooks for our clients. The studio also hosts private bookings and corporate retreats, giving us real-time insight into what guests love and staff can operate with ease.

The Directors

Jerome Darmon — Director, ZenGlow Asia

A former investment banker, **Jerome** brings commercial clarity and an operator’s mindset. As owner of Life Balance Phuket and co-founder of ZenGlow Asia, he focuses on design that respects real constraints, brand-agnostic equipment choices, and installation checklists that end in a confident handover. His north star: **the right solution, at the right price, installed right.**

Antonin Rouveyrol — Director, ZenGlow Asia; Founder, Pool Control

A pool systems specialist based in Phuket, Antonin leads the **operations side** of ZenGlow projects. His team owns the full field chain—site survey, MEP alignment, installation, testing and commissioning, staff training, and turnkey delivery. Known for practical plant-room design and stable water management, he brings the rigor that keeps projects on schedule and performing as specified.

How it comes together for you

- **One brief, one accountable journey:** ZenGlow designs and manages; Antonin’s team executes in the field.
- **Independent, transparent roles:** clear scopes, clear responsibilities, and clean communication.
- **Hospitality-grade outcomes:** photogenic spaces guests want to use—and teams can run without stress.
- **Clear timing** for delivery and installation.



RED LIGHT THERAPY CATALOGUE

ZenGlow Oyster PRO • Pro RLT Bed



The **ZenGlow Oyster Pro** is a high-performance full-body red light therapy bed designed for advanced photobiomodulation in professional wellness, recovery, and clinical environments. With multi-wavelength LED technology and intelligent control systems, it delivers powerful therapeutic benefits including tissue repair, improved circulation, and enhanced recovery.

Key Features

Luxury Front Panel Design

Elegant aesthetics with an integrated brand shield and ambient flow lighting for a high-end visual impact.

Exclusive Extra Side Cabin Structure

Provides enhanced user space and optimized functionality through a unique side cabin design.

Premium Materials

Crafted with UK Lucite® acrylic sheets delivering up to 99% light transmittance for optimal red light therapy effectiveness.

High-Performance LED Chips

Equipped with EPISTAR® LEDs from Taiwan, ensuring superior brightness, stability, and longevity.

Advanced Cooling System

Features a patented wide-lamp-board heat dissipation design to maintain peak performance and durability.

Fresh Air Circulation System

Patented independent air duct system delivering up to 1300 CFM fresh air exchange for user comfort and safety.

Immersive Audio Experience

Built-in Bluetooth surround sound system for an enhanced sensory experience during sessions.

Innovative Multi-Link Rotary Structure

Proprietary mechanical design for smooth, ergonomic adjustability and multi-directional flexibility.

Intelligent Electronics

- Self-developed constant current source for safe, stable LED performance.
- Smart wireless control system for easy, remote operation.
- Independent wavelength control to tailor light output to specific therapeutic needs.
- Fully adjustable duty cycle (1–100%) and pulse frequency (1–10,000 Hz) for precise light modulation.

Flexible Light Source Solutions

Includes three efficient, interchangeable light source configurations, designed to meet diverse clinical and wellness requirements.

Technical Specifications	
Model NO.	ZenGlow Oyster Pro
LEDs	41600 PCS (Taiwan Epistar / UltraChip)
Wavelengths	630:660:810:830:850nm
Led Exposure Angle	120°
Power Output	6500W
Light Source	China Taiwan EPISTAR 0.2W LED chips
Dimensions	230cm × 125cm × 115cm / Tunnel Height 430mm
Net Weight	300kg
LED Lifespan	100,000 Hours
Electromagnetic Radiation (EMF)	0 at 15 cm
Certification	US FDA, FCC, CE, ROHS



ZenGlow Oyster ONE • Pro RLT Bed



The **ZenGlow Oyster One** is a premium full-body photobiomodulation bed designed for advanced wellness, recovery, and medical-grade light therapy. Combining high-power red and near-infrared light, it delivers deep tissue treatment, enhanced circulation, and accelerated healing — ideal for wellness centers, clinics, and professional sports applications.

Optical Components

Light Guide Material:

Premium UK Lucite® Acrylic Sheet
Up to 99% Light Transmittance for superior clarity and diffusion

LED Source:

China Taiwan EPISTAR® LED Chips
High brightness, energy-efficient, and long-life LEDs

Wavelength Control:

Independent Wavelengths Control Available
Allows precise spectral tuning for various applications

Thermal Management

Heat Dissipation Scheme:

Patented Wide-Lamp-Board Design for efficient thermal diffusion

Cooling System:

Patented Independent Separate Air Duct Cooling System
Optimized for silent operation and enhanced airflow
Fresh Air Exchange Volume: 1000 CFM (Cubic Feet per Minute)

Electrical & Control System

Current Control:

Self-Developed Constant Current Source Scheme
Ensures stable performance and LED longevity

Duty Cycle:

Adjustable from 1% to 100%
Fine-grain brightness control for customized lighting effects

Pulse Frequency:

Adjustable from 1Hz to 10,000Hz
Suitable for scientific, medical, or artistic applications

Control Interface:

Self-Developed Wireless Smart Control System
Allows remote access and full system customization
Compatible with modern smart home platforms (if applicable)

Light Source Configuration

Standard Light Combinations:

Comes with 3 Efficient Groups of Standard Light Source Solutions
Supports versatile usage across ambient, task, or accent lighting

Optional Features

Audio System:

Bluetooth Surround Audio System (Optional)
Integrates immersive sound with lighting environment

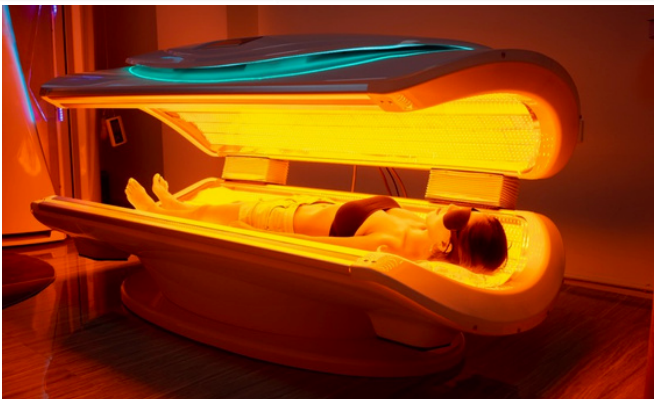
6. Design & Aesthetic

Visual Style:

Designed for ambient and fantastic flow lighting effects
Emphasizes both visual appeal and functional brilliance

Technical Specifications

Model NO.	ZenGlow Oyster One
LEDs	26880 PCS (Taiwan Epistar / UltraChip)
Wavelengths	630:660:810:830:850nm
Led Exposure Angle	120°
Power Output	4500W
Light Source	China Taiwan EPISTAR 0.2W LED chips
Dimensions	215cm × 106cm × 91cm / Tunnel Height 380mm
Net Weight	260kg
LED Lifespan	100,000 Hours
Electromagnetic Radiation (EMF)	0 at 15 cm
Certification	US FDA, FCC, CE, ROHS



ZenGlow PRO 1200 Full Body Pro Panel

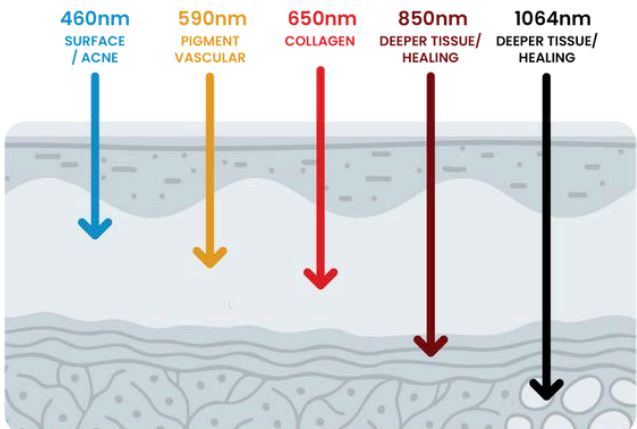


The Top-of-the-Line Red Light Therapy Panel with Touch-Screen for Medical Applications

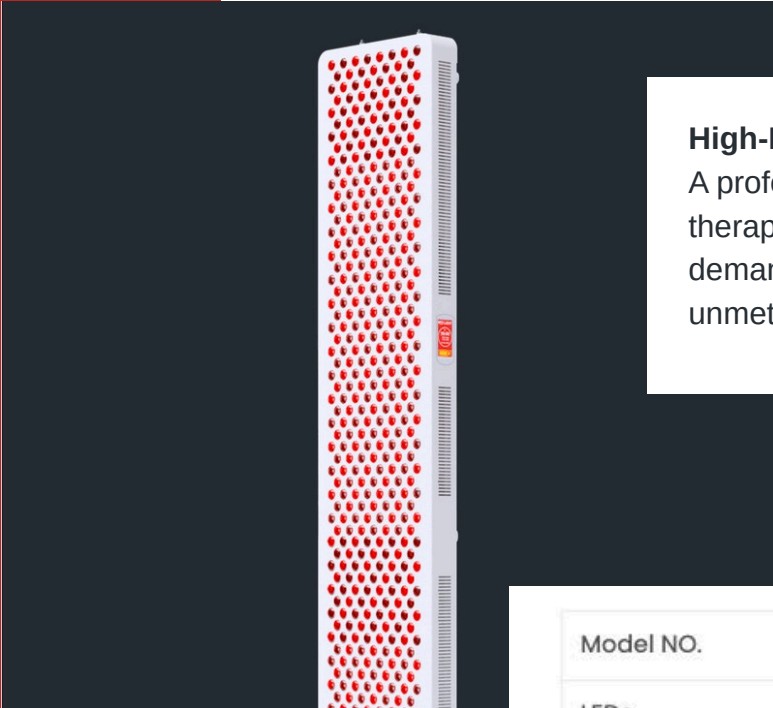
A premium red light therapy panel designed to meet the high standards of medical institutions, sports recovery centers, and wellness facilities. This top-tier solution ensures efficient, fast, and effective full-body treatments for professional environments.



Model NO.	ZenGlow1200-FS
LEDs	1200PCS (Taiwan Epistar / UltraChip)
Wavelengths	630:660:810:830:850nm or 480:630:660:810:830:850:1060nm
Maximum Coverage Area	221cm × 119cm
Power Output	2000W
Irradiance	>200 mw/cm² at 15cm
Dimensions	180cm × 60cm × 6.6cm
Net Weight	40.6kg
LED Lifespan	50,000 Hours
Electromagnetic Radiation (EMF)	0 at 15 cm
Certification	US FDA, FCC, CE, ROHS



ZenGlow PRO 600 • Pro RLT Panel



High-Performance Device for Full-Body Treatment

A professional-grade, high-performance red light therapy panel specifically designed to meet the demands of full-body treatments while addressing key unmet market needs.

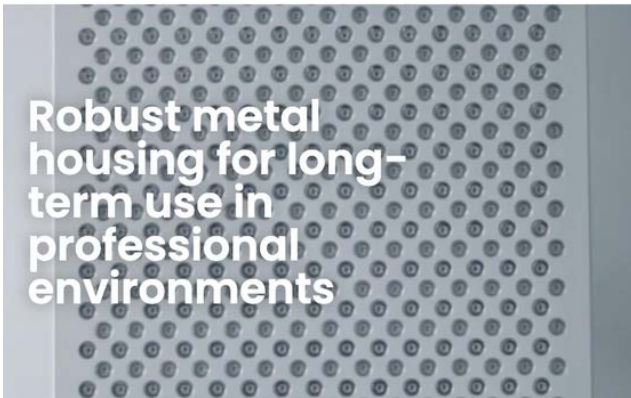


Model NO.	ZenGlow600-FS
LEDs	600PCS (Taiwan Epistar / UltraChip)
Wavelengths	630:660:810:830:850nm (or custom)
Maximum Coverage Area	221cm × 60cm
Power Output	992W
Irradiance	>200 mw/cm² at 15cm
Dimensions	180cm × 30cm × 6.6cm
Net Weight	21.5kg
LED Lifespan	50,000 Hours
Electromagnetic Radiation (EMF)	0 at 15 cm
Certification	US FDA, FCC, CE, ROHS



SMART TOUCH PANEL

Convenient & user-friendly interface.



Robust metal housing for long-term use in professional environments

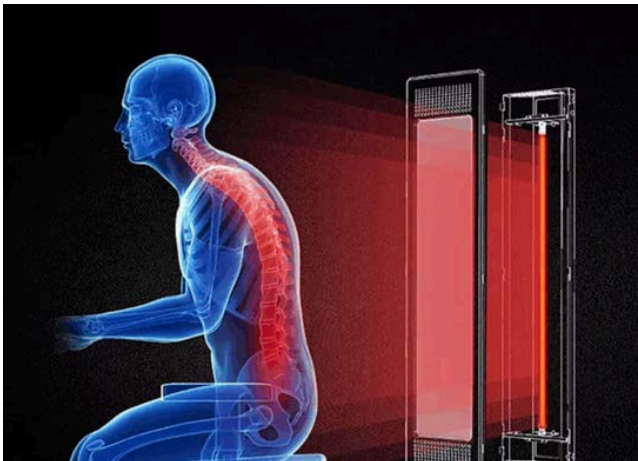
ZenGlow One • Professional Sauna Panel



Getting your RLT ans Sauna all at once

The SAUNA RED LIGHT PANEL is a professional-grade red light therapy panel engineered specifically for sauna and bathroom environments. It features a high-power LED setup, robust IP65-rated construction, and advanced dual-wavelength technology, it provides outstanding wellness benefits, including skin rejuvenation, pain relief, and relaxation —ideal for home and spa settings.

Model	Sauna One
LEDs	320PCS (Taiwan Epistar / UltraChip)
wavelengths	660nm:850nm or custom
irradiance	>103mW/cm2, at 15cm
Voltage	AC 100-240V
Power Consumption	217W
Dimensions	100x25x2.5 cm
Weight (Net)	7.6kg
Beam Angle	45 Degrees
EMF Emission	Negligible
LED Lifespan	50,000 hours
Control Options	LCD Panel, Remote Controller
Timer	1-30 minutes
Intensity Dimmer	0%-100%
Shell Material	SPCC
Certifications	FDA, FCC, CE, ROHS
Warranty	3 Years





THAILAND / INDONESIA / PHILIPPINES



MALAIWANA

BAADSTUDIO

BENJAMIN ANNABELLE ARCH DESIGN STUDIO LTD COMPANY



KHRAM

Sri panwa
PHUKET



Manick Hillside
PHUKET



MAYA
BEACH CLUB PHUKET